

At Pepco, we are committed to delivering safe, reliable energy to our customers and communities in Maryland. As part of that commitment, we will be upgrading a transmission line that runs between our Oak Grove and Talbert substations in Prince George’s County.

Why It’s Important



Provides continued reliability for nearly 45,000 customers in the area.



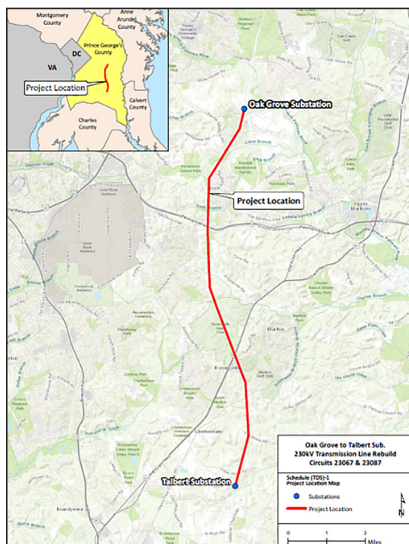
Strengthens local energy infrastructure against more extreme weather, like major storms and hurricanes.



Modernizes critical infrastructure in Prince George’s County, while helping to increase its resiliency and longevity.

Project Timeline & Details

This work is expected to begin in the summer of 2024 and includes rebuilding 10.2 miles of critical transmission lines along our property in central Prince George’s County. The work will begin at our Oak Grove substation in Upper Marlboro and continue south along our property, crossing Rt. 4 and Rt. 301 and ending at our Talbert substation in Brandywine.



The project will replace the 62 aging lattice structures that hold the lines with stronger steel poles that are capable of withstanding more severe weather. The current lines and supporting infrastructure were built in 1968 and have served the area for more than 50 years. While well maintained, some equipment is approaching the end of its intended service life and needs to be modernized.

Transmission lines are an important part of the local energy grid as outages to this critical infrastructure can impact tens of thousands of customers. By carrying energy at high voltages, the transmission system can efficiently move large amounts of power over long



distances. When it reaches communities where it is needed, electricity from the transmission system is reduced to lower voltages at substations, before being delivered along the distribution system to homes and businesses.

Safety

Safety is our top priority. While the majority of this work will be conducted on Pepco-owned property, we are coordinating with the Prince George’s County Department of Transportation to create traffic control plans to help ensure work is completed safely and to minimize disruption. Installation of the equipment may require lane closures and parking restrictions in some locations. Appropriate notice will be provided ahead of this work and signage will be used to direct traffic when needed.

We Value Community Input

We are committed to keeping customers informed every step of the way through community outreach, updates on our website and social media channels, and more. If you have questions, please contact Tony Ruffin, Pepco external affairs manager, at aruffin@pepco.com.

Enhancing Reliability Across Maryland

This project is part of our broader strategic effort to strengthen and modernize the energy grid in Maryland. This effort includes dozens of targeted projects in communities across Prince George’s and Montgomery counties to harden our critical energy infrastructure and build a climate ready grid that is more resilient to changing weather patterns. Visit pepco.com/reliability to learn more.